

DIN 2448 / DIN1626 / DIN17175 Seamless Carbon Steel Tubes For Construction 12CrMo195

Our Product Introduction

Basic Information

- Place of Origin: Jiangsu China (Mainland)
- Brand Name: WUXI SYLAITH
- Certification: SGS ISO ROHS
- Model Number: DIN 2448 / DIN1626 / DIN17175
- Minimum Order Quantity: 1 MT
- Price: Negotiable
- Packaging Details: Standard waterproof package
- Delivery Time: 3-10days
- Payment Terms: T/T, L/C
- Supply Ability: 8000MT/Month



Product Specification

- Application: Fluid Pipe
- Delivery Condition: BK|BKS|BKW|NBK|GBK
- Product Name: Seamless Steel Tubes
- Section Shape: Round
- Standard: JIS G3461|DIN 17175|DIN1626|DIN1629
- Technique: Seamless
- Highlight: **seamless stainless steel tube,
Seamless Steel Tubing**

Product Description

DIN 2448 / DIN1626 / DIN17175 Seamless Carbon Steel Tubes For Construction 12CrMo195

Product Description

The raw material of seamless carbon steel pipe is a round tube blank, which is cut by a cutting machine into a billet with a length of about 1 meter, and sent to a furnace for heating through a conveyor belt. The billets are fed into the furnace and heated at about 1200 degrees Celsius.

Type	DIN 2448 / DIN1626 / DIN17175
Pipe Size	6 mm ~ 350 mm
Wall Thickness	0.8 mm ~30mm
Length	5.8m,5.85m,6m,11.8m,12m Random length: 5-24m
Standard	DIN 2448,DIN1626,DIN17175, DIN1629 ASME B36. 10M-1996,API 5L JIS G3461, JIS G3456, JIS G3452,JIS G3454,JIS G3455,JIS G3457,
Material	ST37.0,ST35.8,St37.2,St35.4/8,St42,St45,St52,St52.4 A53B, A106B, API 5L B,X42,X46,X52,X60, X65 STP G38,STP G42,STPT42,STB42,STS42,STPT49,STS49
Application	petroleum, construction ,shipbuilding, smelting, aviation, power, foodstuff, papermaking, chemical, medical equipment, boiler heat, exchanger, gas metallurgy, etc.
Surface	Hot galvanized, Cold galvanized, Painted black, varnish paint, anti rust oil, 3PE, or as per customers' requirements
Package	Steel strips bundled, Woven bag packed, Plastic caps on both ends, or as per customers' requirements.
Certificate	SGS ISO ROHS
Advantages	1.High quality and prompt delivery 2.Competitive price and attentive services 3.Reliable partner

Chemical Composition:

STANDARD	GRADE	CHEMICAL COMPOSITION					
		C	Si	Mn	P,S	Cr	Mo
DIN 17175	St35.8	≤0.17	0.10-0.35	0.40-0.80	≤0.030	/	/
	St45.8	≤0.21	0.10-0.35	0.40-1.20	≤0.030	/	/
	15Mo3	0.12-0.20	0.10-0.35	0.40-0.80	≤0.030	/	0.25-0.35
	13CrMo44	0.10-0.18	0.10-0.35	0.40-0.70	≤0.030	0.70-1.10	0.45-0.65
	10CrMo910	0.08-0.15	≤0.50	0.40-0.70	≤0.030	2.00-2.50	0.90-1.20

Mechanical properties:

STANDARD	GRADE	Tensile Strength(Mpa)	Yield Strength(Mpa)	elongation (%)
DIN 17175	St35.8	360-480	≥235	≥25
	St45.8	410-530	≥255	≥21
	15Mo3	450-600	≥270	≥20
	13CrMo44	440-590	≥290	≥20
	10CrMo910	450-600	≥280	≥18

Detail Photo:



DETAILS-01

PROFESSIONAL LEVEL

High quality material

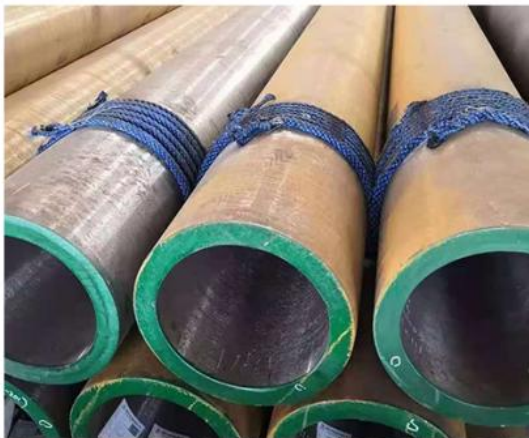
The products are made of high-quality materials with guaranteed quality and firm and reliable quality

DETAILS-02

PROFESSIONAL LEVEL

Special handling

Products adopt special processing technology, years of experience accumulation, skilled technology, quality first



DETAILS-03

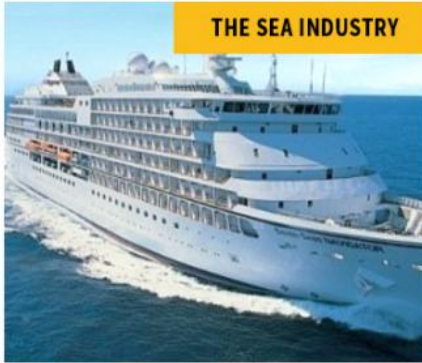
PROFESSIONAL LEVEL

Varied specifications

Strength of manufacturers, support non-standard customization, manufacturers fast production speed, to ensure product quality

Applications:

Mainly used for petroleum, construction, shipbuilding, smelting, aviation, power, foodstuff, papermaking, chemical, medical equipment, boiler heat exchanger, gas metallurgy, etc.



Factroy Pictures:



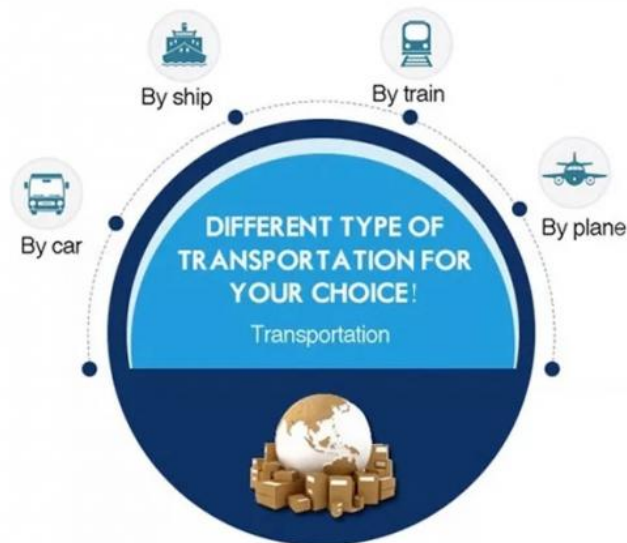
Pipe & Tube Processing:



Packaging & Shipping:

// PACKAGING & SHIPPING //

Quality and safety, reliable purchase Buy at ease



High Speed
Express for sample or urgently orders!



Certificates:



FAQ:

Q1: ARE YOU FACTORY OR TRADER?

A1: Wuxi Sylath Special Steel Co., Ltd is a manufacturer of steel pipe and tube since 2010. We've gained our Export Right and become an integrated company of industry and trade in order to satisfy buyer's multi-request on different material and

products.

Q2: WHICH MATERIAL/PRODUCTS YOU CAN PROVIDE?

A2: Seamless Stainless Steel Pipe / Tube, Seamless Carbon Stainless Steel Pipe /Tube,Galvanized Steel Tube with any Shape and Welded pipes can also be available.

Q3: HOW TO GET A SAMPLE?

A3: FREE samples are available for your checking and testing. And to get free samples, you need to send us your detailed receiving address (including post code) and your DHL/FedEx/UPS account for collecting samples, courier cost will be paid in your side.

Q4. CAN YOU PRODUCE THE PRODUCTS ACCORDING TO MY OWN DRAWINGS?

A4: Yes, we can produce the products according to your drawings that will be most satisfy you.

Q5: HOW TO VISIT YOUR FACTORY?

A5: Most of the main cities have flights to Shanghai; you can take flight to Shanghai Putong/Hongqiao International Airport. If you come from Hongkong, it will take 2 hours by flight (every day 5 flight around noon time).



WUXI SYLAITH SPECIAL STEEL CO.,LTD



18921107008



sales1@sissteel.com



seamless-steel-tubes.com

168 Qiangao Road, Liangxi District, Wuxi, China